

# The Eva

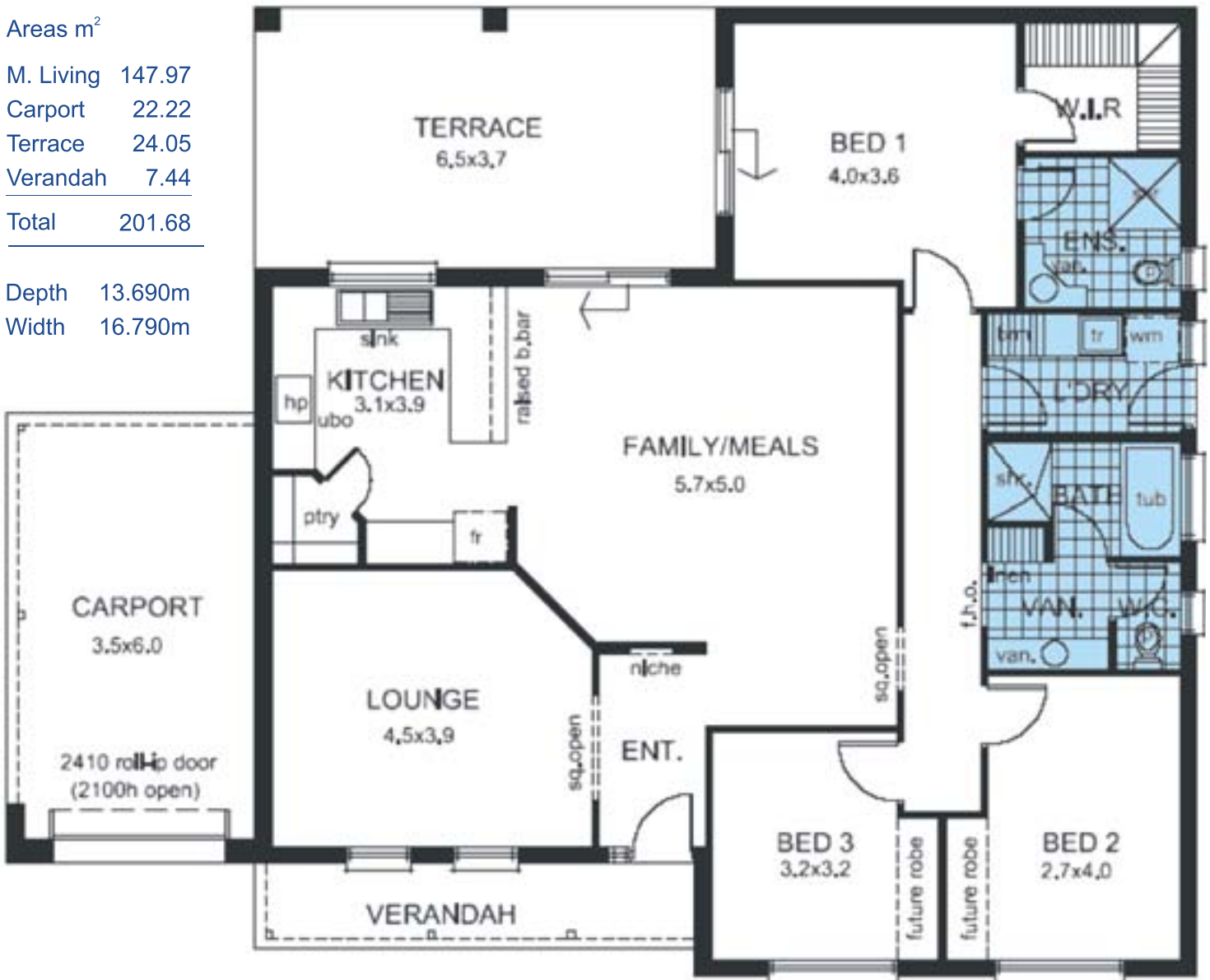


A well proportioned three bedroom home with a separate lounge in addition to the open plan living area. Other attributes afforded to this design include a walk in robe and ensuite, plus a terrace under the main roof and a bull nose verandah to the front.

## Areas m<sup>2</sup>

M. Living	147.97
Carport	22.22
Terrace	24.05
Verandah	7.44
<b>Total</b>	<b>201.68</b>

Depth 13.690m  
Width 16.790m



Note: Floor plans and facades are for illustration purposes only, and can be altered to suit your preferred style.



*Murray River Homes... "We have a passion for excellence"*