

The Tarella



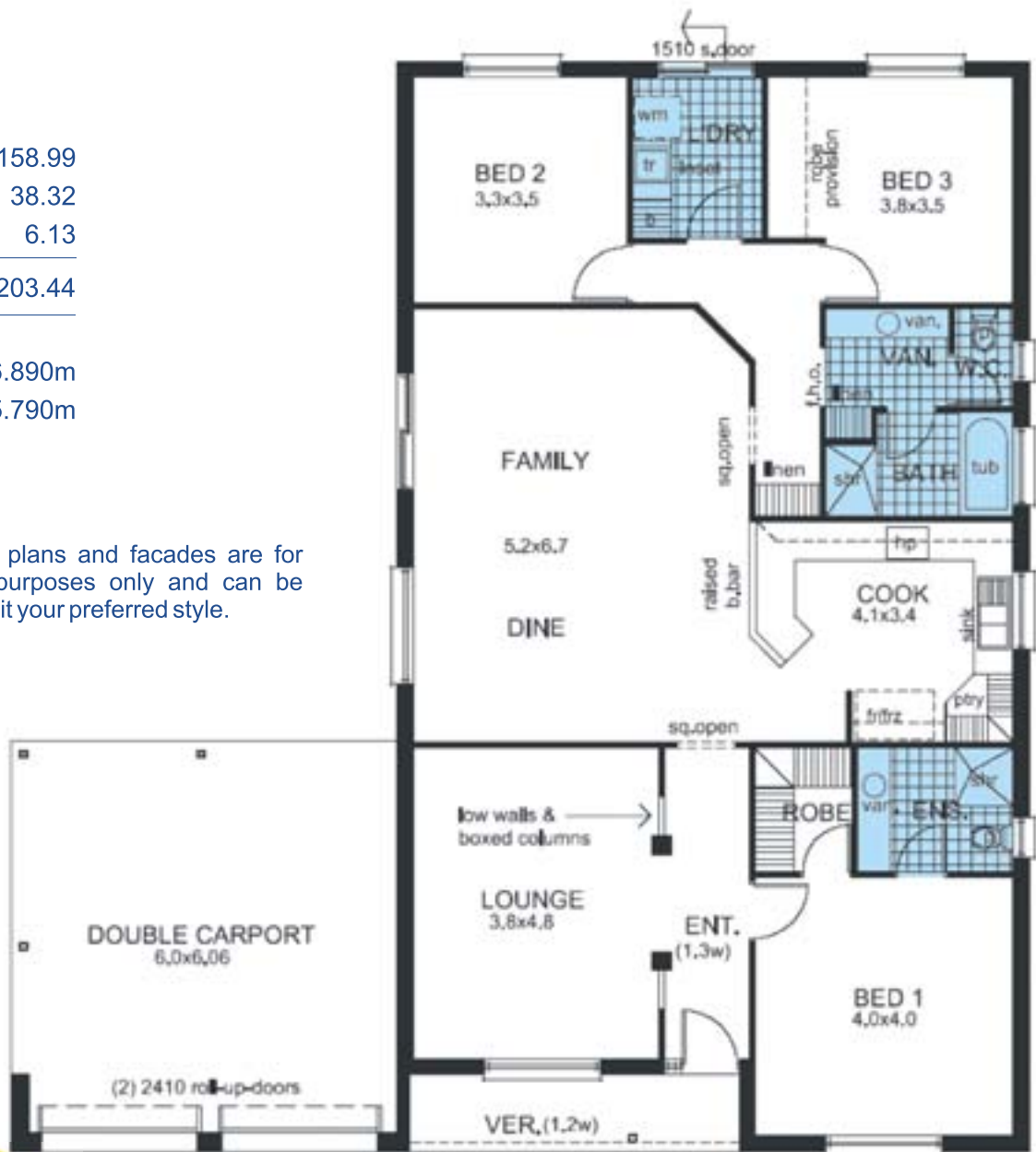
The Tarella's main entry features low walls and columns, which opens to the formal lounge. The ample kitchen features a corner pantry, numerous overhead cupboards as well as a raised breakfast bar, which faces the dining area. Second and third bedrooms are located at the rear of the home.

Areas m²

| | |
|--------------|---------------|
| M. Living | 158.99 |
| Garage | 38.32 |
| Verandah | 6.13 |
| Total | 203.44 |

| | |
|-------|---------|
| Depth | 16.890m |
| Width | 15.790m |

Note: Floor plans and facades are for illustration purposes only and can be altered to suit your preferred style.



Murray River Homes... "We have a passion for excellence"