

The Trafalgar



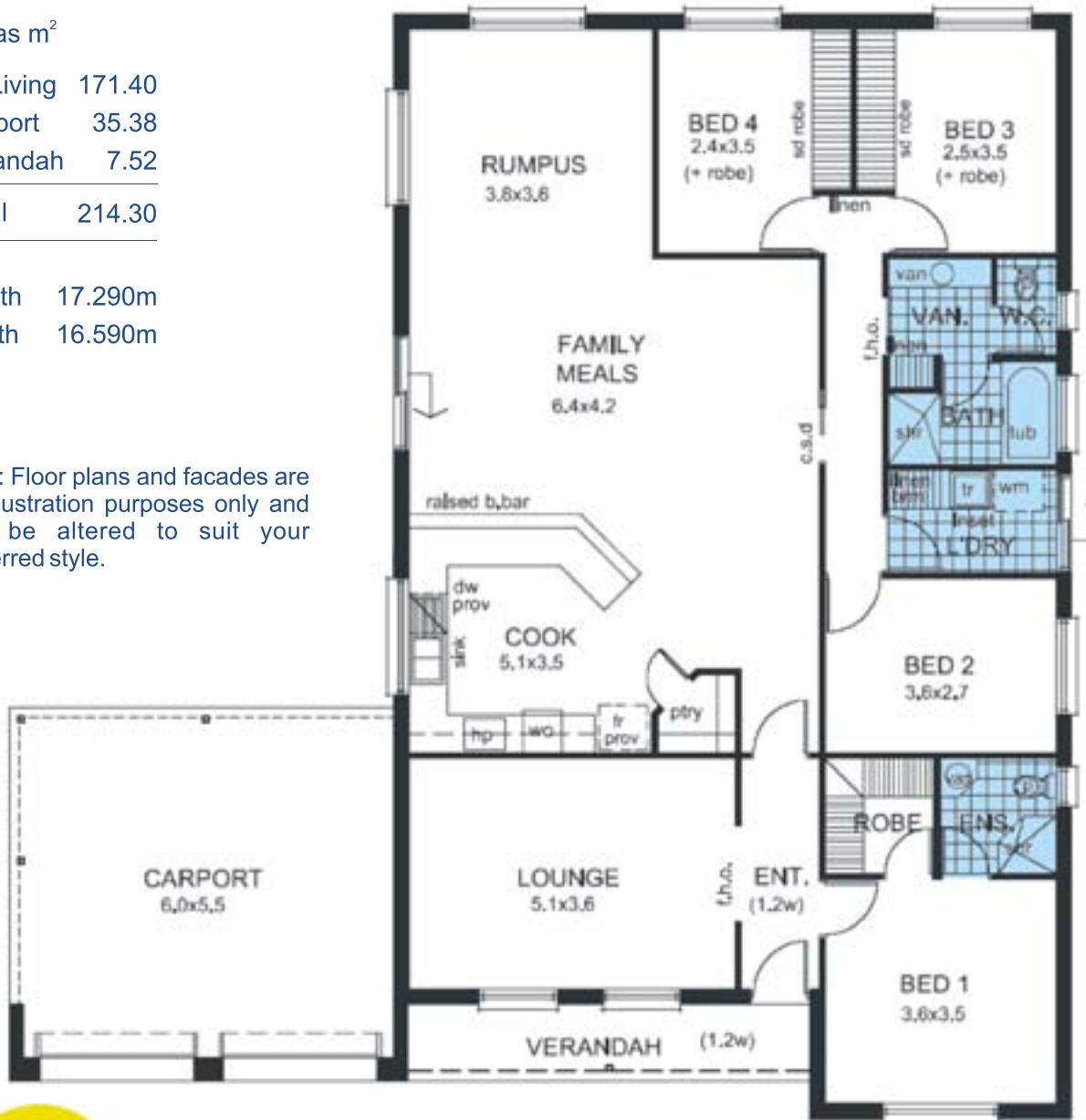
The excellent layout of this plan has provided many Riverland families with a very versatile and functional home, thus making the Trafalgar our most popular design. The large windows and sliding door accentuate the long open plan of the kitchen/mealsrumpus area.

Areas m²

M. Living	171.40
Carport	35.38
Verandah	7.52
Total	214.30

Depth 17.290m
Width 16.590m

Note: Floor plans and facades are for illustration purposes only and can be altered to suit your preferred style.



Murray River Homes... "We have a passion for excellence"